

Western Alliance of  
Community College  
Academic Leaders

Trailblazing a New Pathway: Challenging  
Assumptions about Community Colleges

# ANNUAL MEETING PROGRAM

October 4-6, 2023 • Tacoma, Washington



# MESSAGE FROM THE CHAIR



## Welcome

On behalf of your executive committee and the WICHE staff, we are excited to welcome you to our annual meeting. This year's program theme, *Trailblazing a New Pathway: Challenging Assumptions about Community Colleges*, will create space for higher education leaders to have critical conversations about the role of community colleges, the critical work that we do to serve those students who are furthest from educational justice, and to think creatively and collaboratively about our futures. The conference program offers a dynamic slate of speakers, as well as space for dialog and connection. The higher education landscape is changing rapidly and as instructional leaders we have an opportunity to shape that change in ways to assure we create opportunities for students and position ourselves as critical partners in the economic sustainability of our communities. I look forward to engaging with you in person and learning together.

Thank you for joining us!

### **Dr. Valerie Sundby, Alliance Meeting Chair**

Director of Transfer Education, Washington State Board for Community and Technical Colleges

## About the Alliance

The members of the Western Alliance of Community College Academic Leaders (Alliance) are the chief academic officers of community colleges and technical schools along with their associated system and state agencies in the 16 Western states and the U.S. Pacific Territories and Freely Associated States which make up the Western Interstate Commission for Higher Education (WICHE) region. Through the Alliance, these top academic leaders share perspectives on current issues, work together on regional projects that are beyond the scope of a single institution or state, and contribute resources and expertise to build a stronger future for higher education in the West. The Alliance was founded in 2010 with support from the Western Academic Leadership Forum which is also based at WICHE.

## Who should attend

In attendance you will find colleagues from the WICHE region eager to share the lessons they've learned from tackling a host of institutional and academic challenges, including some of the ones you may be facing. Attendees include:

- ▶ Provosts, vice presidents, and directors of academic affairs at community colleges and technical schools
- ▶ Chief executive officers and chief academic officers of related systems and statewide agencies
- ▶ Institutional staff with expertise in the program topic areas, accompanying those above at their invitation

— Bernice Joseph Leadership Award – 2023 Winner —

# CONGRATULATIONS TO Laramie County Community College

For Their Open Educational Resources (OER) Task Force

## A Toolkit of Resources and Insights

ACCESS FOCUSED RESOURCES AND TOOLS  
FOR ADMISSIONS

### ACCESS & DIVERSITY COLLABORATIVE

Key resources for higher ed, including:

- Preliminary guidance on the SCOTUS decision, offered by EducationCounsel
- A practical overview of race- and ethnicity-neutral strategies
- Upcoming events and past recordings

[collegeboard.org/race-in-admissions](https://collegeboard.org/race-in-admissions)

### LANDSCAPE™

A free data-driven tool that:

- Provides consistent high school and neighborhood information for all applicants
- Helps colleges understand an applicant's accomplishments in the context of the opportunities available to them

[professionals.collegeboard.org/landscape](https://professionals.collegeboard.org/landscape)

 CollegeBoard

© 2024 College Board

THANK YOU TO OUR HOST:



AND TO OUR GENEROUS SPONSOR  
WHO HELPED MAKE THIS MEETING  
POSSIBLE:



# SCHEDULE AT A GLANCE

## WEDNESDAY, OCTOBER 4

---

9:00 am - 5:30 pm	Registration Open
9:30 am - 12:00 pm	Executive Committee Meeting (executive committee members only)
12:00 pm - 1:00 pm	Lunch (executive committee members only)
1:00 pm - 4:00 pm	Preconference Workshop: No Holding Back: Lessons from Institutions in Analyzing Administrative and Student Success Holds Data*
5:30 pm - 8:30 pm	Reception, Dinner, and Keynote: Bound Together Through Our Shared Commitment to Student Success and Community Empowerment*

\*Denotes pre-registration requirements and added fees

## THURSDAY, OCTOBER 5

---

7:00 am - 5:00 pm	Registration Open
8:00 am - 9:00 am	Breakfast
9:00 am - 9:15 am	Welcome and Meeting Overview
9:15 am - 10:45 am	Perceptions and Value of Basic Education for Adults
10:45 am - 11:00 am	Break
11:00 am - 12:00 pm	Faculty Recruitment and Retention: Investing in Your Future through Internal and External Partnerships
12:00 pm - 12:15 pm	Bernice Joseph Leadership Award Presentation
12:15 pm - 1:15 pm	Luncheon
1:15 pm - 3:00 pm	Concurrent Sessions: <ul style="list-style-type: none"><li>▶ Applying Appreciative Analysis to Race Equity Data from Community and Technical Colleges</li><li>▶ The Role of Community Colleges in Improving Bachelor's Degree Completion</li><li>▶ Leveling the Field: Expanding Access to Prior Learning Assessment</li></ul>
3:00-3:15 pm	Break
3:15-4:45 pm	Corrections Education: Supporting our Justice-Impacted Students

*Dinner on your own*

## FRIDAY, OCTOBER 6

---

8:00 am - 8:45 am	Breakfast
8:45 am - 9:15 am	Membership Meeting
9:15 am - 10:15 am	Collaborative Synergy: Maximizing Institutional and Community Success through Strategic Partnerships
10:15 am - 10:30 am	Break
10:30 am - 11:30 am	Strategies for Dialogue and Partnership with Four-Year Universities: A 'Cone of Silence' Panel
11:30 am	Adjournment

# PROGRAMS AND SPEAKERS

## WEDNESDAY, OCTOBER 4

---

*Hotel Murano*

**9:00 am - 5:30 pm**

*Ballroom Foyer*

**Registration Open**

**9:30 am - 12:00 pm**

*Venice 2*

**Executive Committee Meeting** (*executive committee members only*)

**12:00 pm - 1:00 pm**

*Venice 2*

**Lunch** (*executive committee members only*)

**1:00 pm - 4:00 pm**

*Venice 2*

**Preconference Workshop\***

No Holding Back: Lessons from Institutions in Analyzing Administrative and Student Success Holds Data

Since 2022, 12 member institutions of the Alliance and Forum have participated in a community of practice along with WICHE and AACRAO to analyze the impact that transcript and/or student success holds policies have on student outcomes. Two institutions will share their findings, discuss proposed changes to current policies, and give recommendations for other institutions interested in analyzing holds data and changing campus policy. Next summer, WICHE and AACRAO will be releasing a seminal brief from this work as well as a technical guide that other institutions can use to replicate this work.

Speakers:

- ▶ Brenda Hanson, Dean, Compliance, Flathead Valley Community College
- ▶ Stacy Maestas, Registrar, Laramie County Community College
- ▶ Olivia Tufo, Manager of Community Engagement and Development, WICHE

**5:30 pm - 8:30 pm**

**Reception, Dinner, and Keynote: Bound Together Through Our Shared Commitment to Student Success and Community Empowerment\***

Having served at community colleges, comprehensive masters universities and a large flag-ship research university, Dr. Lange has been inspired by the leadership teams at every type of institution. Each team has been consistent in their focus on student success and potential for the institution to positively impact the local community. Dr. Lange will share her observations about this shared commitment and how institutions can leverage that to improve relationships between community colleges and their 4-year partners.

Speaker:

- ▶ Sheila Edwards Lange, Chancellor, University of Washington, Tacoma

*\*Denotes prepaid registration requirements*

## THURSDAY, OCTOBER 5

---

**7:00 am - 5:00 pm**

*Ballroom Foyer*

### **Registration**

**8:00 am - 9:00 am**

*Venue 1, 2*

### **Breakfast**

**9:00 am - 9:15 am**

*Venue 3, 4*

### **Welcome and Meeting Overview**

**9:15 am - 10:45 am**

*Venue 3, 4*

### **Perceptions and Value of Basic Education for Adults**

This session highlights the perceptions and values of adult learners in Basic Education for Adults programs in the Community and Technical College System. Featuring a panel BEdA practitioners and students, we will dispel those perceptions of BEdA by highlighting the value BEdA programs bring to the state through students' completion and retention into our CTCs for post-secondary credentialing.

Speakers:

- ▶ MarcusAntonio Gunn, Policy Associate, Equity Diversity & Inclusion and Professional Development, Washington State Board for Community and Technical Colleges
- ▶ Nicole Hopkins, Policy Associate, Integrated Basic Education and Skills Training, Washington State Board for Community and Technical Colleges

Moderator:

- ▶ Katelynn Orellana, Program Administrator, Equity Diversity & Inclusion and Professional Development, Washington State Board for Community and Technical Colleges

**10:45 am - 11:00 am**

### **Break**

**11:00 am - 12:00 pm**

*Venue 3, 4*

### **Faculty Recruitment and Retention: Investing in Your Future through Internal and External Partnerships**

Are you interested in recruiting faculty who are diverse in the identities they hold, their research agenda or scholarship, and their campus service or leadership interests? Do you have an initiative to assess your faculty recruiting practices and policy? Have you noticed a change in your candidate pools that differs from your academic program coverage and recruiting goals? In this session, your takeaways will include building cross-institutional faculty recruitment collaborations, developing a sustainable pipeline to grow the candidate pool, and creating an abundance mindset for a new initiative. The session may also examine how you partner with minority-serving institutions and offer support structures that diverse faculty may need to thrive. If you are interested in a campus or consortium perspective on faculty recruitment, you will enjoy this session.

Speakers:

- ▶ Raymonda Burgman-Gallegos, Vice President, Programs and Services, Western Interstate Commission for Higher Education
- ▶ Shannon Reed, Dean of Arts and Science, Woodland Community College

**12:00 pm - 12:15 pm**

*Venice 1, 2*

**Bernice Joseph Leadership Award Presentation**

Congratulate this year's winner of the Bernice Joseph Academic Leaders Award for 2023.

Speaker:

- ▶ Jeffrey Alexander, Vice President of Academic Affairs, Truckee Meadows Community College

**12:15 pm - 1:15 pm**

*Venice 1, 2*

**Luncheon**

**1:15 pm - 3:00 pm**

**Concurrent Sessions**

There will be 3 breakout sessions that will run concurrently for 45 minutes each. Participants will choose 2 sessions to attend.

*Torcello*

**Applying Appreciative Analysis to Race Equity Data from Community and Technical Colleges**

This presentation explores an alternative and supplemental approach to traditional race equity gap analysis. Looking at student pathways through the Washington state community and technical (CTC) system, this approach applies appreciative and small population methods to race equity data. By working with student demographic data in isolation from gap analysis, this process looks to identify critical points in student pathways, allow analysis of small populations and intersections, and define demographically relevant benchmarks for success.

Speaker:

- ▶ Summer Kenesson, Director of Policy Research, Washington State Board for Community and Technical Colleges

*Venice 3, 4*

**The Role of Community Colleges in Improving Bachelor's Degree Completion**

The proliferation of bachelor's level programs in the community and technical colleges altered the landscape of higher education in Washington and led to positive outcomes for students, colleges and communities. This session will share lessons learned and explore what the next ten years will bring for community college baccalaureate degrees.

Speakers:

- ▶ Valerie Sundby, Director of Transfer Education, Washington State Board for Community and Technical Colleges
- ▶ Joyce Hammer, Deputy Executive Director for Education, Washington State Board for Community and Technical Colleges



Burano

### **Leveling the Field: Expanding Access to Prior Learning Assessment**

Front Range Community College, a Colorado Community College (CCCS) institution, presents successes with expanding access to credit for prior learning / prior learning assessment for adult students of color in a pilot funded by Racial Equity for Adult Credentials in Higher ED Collaborative (REACH), a subgrant of a Lumina Foundation grant.

Speakers:

- ▶ Chris McGilvray, Academic Dean, Front Range Community College
- ▶ Dolly Rosenbrook, Chair of Business for Creative Industries, BAS, Front Range Community College
- ▶ Ayelet Zur-Nayberg, Director of Adult Student Success, Colorado Community College System

**3:30 pm - 3:15 pm**

**Break**

**3:15 pm - 4:45 pm**

*Venice 3, 4*

### **Corrections Education: Supporting our Justice-Impacted Students**

This presentation will look at best practices for supporting justice-impacted students. It will give a brief overview of mass incarceration and the Washington Corrections' Education Navigator program that supports students transitioning from prison facilities to community colleges.

Speakers:

- ▶ Hanan Al-Zubaidy, Program Administrator, Washington State Board for Community and Technical Colleges
- ▶ Emily Jones, Education Navigator, Tacoma Community College
- ▶ Suzanne Prefontaine-Phillips, Re-Entry Program Navigator, Spokane Community College

**Dinner on your own**

## FRIDAY, OCTOBER 6

---

**8:00 am -8:45 am**

*Venue 3, 4*

**Breakfast**

**8:45 am - 9:15 am**

*Venue 3, 4*

**Membership Meeting**

**9:15 am -10:15 am**

*Venue 3, 4*

**Collaborative Synergy: Maximizing Institutional and Community Success through Strategic Partnerships**

In a time of great financial challenge for higher education, public private partnerships have become a synergistic method for institutions to achieve strategic goals and strengthen connection with workforce and industry. Using a current partnership, this session will outline methods to develop creative, collaborative partnerships to drive strategic initiatives.

Speakers:

- ▶ Kaylyn Bondy, Vice President for Student Affairs, Bismarck State College
- ▶ Mari Volk, Dean of Current & Emerging Technologies, Bismarck State College

**10:15 am - 10:30 am**

**Break**

**10:30 am - 11:30 am**

*Venue 3, 4*

**Strategies for Dialogue and Partnership with Four-Year Universities: A 'Cone of Silence' Panel**

Two-year colleges sometimes struggle to build and maintain productive, collaborative relationships with their principal four-year university transfer partners. The challenges can include misconceptions and mistrust about two-year college students, faculty, program quality, and the purpose of the two-year mission. This session offers a chance for open, frank discussion as well as tips for building better partnerships.

Speakers:

- ▶ Jeffrey Alexander, Vice President of Academic Affairs, Truckee Meadows Community College
- ▶ Todd Schwarz, Provost, College of Southern Idaho
- ▶ Valerie Sundby, Director of Transfer Education, Washington State Board for Community and Technical Colleges

**11:30 am**

**Adjournment**

# SPEAKER BIOGRAPHIES



**HANAN AL-ZUBAIDY** has served as the corrections education program administrator for the Washington State Board for Community and Technical Colleges since March 2022. Prior to this, Al-Zubaidy was the education director out at Larch Correctional facility. She continues to work closely with the department of corrections to offer education services to incarcerated individuals in Washington. Al-Zubaidy has a master's degree in educational leadership and policy from Portland State University.



**JEFFREY ALEXANDER** has served as vice president of academic affairs at Truckee Meadows Community College since June 2021, and he represents Nevada's 2-year public institutions as vice chair of the Western Alliance of Community College Academic Leaders (Alliance). Previously, he served for six years as dean of arts and sciences at Pueblo Community College, prior to which he taught history at the University of Wisconsin-Parkside. Alexander is an historian of modern Japan and has published three books on Japanese consumer product manufacturing, sales, and consumption. He holds an M.A. and a Ph.D. in history from The University of British Columbia in Vancouver.



**KAYLYN BONDY, PH.D.**, has served as the vice president for student affairs at Bismarck State College since 2020. Previously, she served Williston State College as vice president for student affairs from 2015-2020 and as registrar/director for institutional research & effectiveness from 2011-2015. She has taught as adjunct faculty and for other organizations. Bondy earned a B.A. in French from the University of North Dakota (UND), a master's in international business from l'Institut d'Administration des Entreprises à Caen, an M.B.A. from the University of St. Thomas, and a Ph.D. in higher education from UND. She was also selected as an Aspen Presidential Fellow in 2020-2021.



**RAYMONDA BURGMAN GALLEGOS** began serving as the vice president of programs and services in October 2021. In this role, she increases student access to high-quality postsecondary education and fosters collaborations between institutions. Previously, Burgman Gallegos served as director of programs and research at HERS (Higher Education Resource Services) for eight years. She also served as an administrator at DePauw University (IN) in academic affairs and the Office of the President and at New College of Florida. Burgman Gallegos was also a tenured professor in economics and management at DePauw University. She also taught at two other institutions in Florida, Santa Fe College and the University of South Florida-St. Petersburg. She received a B.A. in economics from New College of Florida and an M.A. and Ph.D. in economics from the University of Florida.



**MARCUSANTONIO GUNN** currently serves as the policy associate of equity, diversity & inclusion and professional development for basic education for adults at the Washington State Board for Community and Technical Colleges. Gunn's focus during his entire 15-year career has been to serve in adult basic education. Born and raised in Atlanta, GA, he is the first man in his family to receive his high school diploma. He is a first-generation college student and double alumnus of Albany State University, obtaining a B.A. in political science and a B.S. in special education. From Walden University, Gunn aspires to become a double alumnus once more, as he received his M.S. in adult learning from Walden and is currently pursuing an Ed.D. in higher education administration – adult learning.



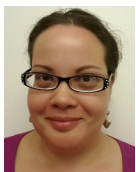
**JOYCE HAMMER, PH.D.**, has over 28 years' experience in the community and technical college system, currently serving as the deputy executive director for education at the Washington State Board for Community and Technical Colleges (SBCTC). Previously, she served as vice president of instruction at Centralia College and as the director of transfer education at SBCTC, developing policy with higher education sector partners. She began her higher education career at Green River College as mathematics faculty and instructional dean. Joyce earned B.A. and M.Ed. degrees at the University of Washington and a Ph.D. in adult higher education at Oregon State University.



**BRENDA HANSON, MA**, serves as the dean of compliance at Flathead Valley Community College (FVCC). Focused on institutional effectiveness and student success, she participates in institutional planning, serves as the primary resource for accreditation initiatives, manages non-instructional department reviews, and is a peer evaluator for the Northwest Commission on Colleges and Universities. Previously, she served as dean of students, director of financial aid, director of educational services, and transfer advisor during her 25-year career at FVCC. Hanson received her B.A. in organizational communication studies from the University of Montana and her M.A. in organizational management from the University of Phoenix.



**NICOLE HOPKINS** is a policy associate on the basic education for adults' (BEaA) team at the Washington State Board for Community & Technical Colleges (SBCTC). Her responsibilities include managing the Integrated Basic Education and Skills Training (I-BEST) and English Literacy and Civics Education (IELCE) programming. She also provides technical assistance for the Ability to Benefit (ATB) funding given to students pursuing their high school credential and degree. Nicole's past experience includes serving at Clark College for 10 years in various roles, with half of that time spent serving adult learners. She received her degree in psychology from Washington State University.



**EMILY DYKSTRA JONES** is an education navigator for Tacoma Community College and also works with students at Washington Corrections Center for Women and Mission Creek Corrections Center for Women. She is a member of education navigators funded through the Washington State Department of Corrections. Since 2016 her focus has been on understanding how to best support students in making their transition home and building a meaningful life after incarceration through education. Jones has nearly 15 years of working with womxn overcoming barriers, is inspired daily by the people she gets to work with and is grateful for opportunities to amplify their voices.



**SUMMER KENESSON** is currently serving as the director of policy research for the Washington State Board for Community and Technical Colleges. She and her team provide leadership and support to inform policy and practice for the 34 system colleges and the agency. Previously, Kenesson held research and leadership positions with Bates Technical College, Olympic College, and Pacific Lutheran University. Prior to moving to the U.S. in 2008, Kenesson worked for 10 years in educational policy in the United Kingdom. Kenesson received her B.A. in history of art from the University of Wisconsin Madison and holds an M.B.A. from the University of Plymouth and a Postgraduate Certificate in Education from the University of Portsmouth.



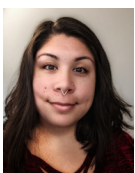
**SHEILA EDWARDS LANGE** serves as the chancellor at the University of Washington Tacoma. She was born in the small town of Pachuta, Miss., and, as a first-generation college student, received a bachelor's degree in social ecology from the University of California, Irvine. She earned a doctorate in educational leadership and policy studies and a Master of Public Administration from the University of Washington in Seattle. Prior to her position at University of Washington Tacoma, Lange served as president of Seattle Central College (SCC). From 2007 to 2015, Lange served as vice president and vice provost for minority affairs & diversity at University of Washington in Seattle.



**STACY MAESTAS, MSM**, has served Laramie County Community College (LCCC) in Cheyenne, Wyoming since 2004, and as registrar since 2009. She oversees day-to-day operations within the Office of the Registrar, serves on multiple cross-functional committees on campus and within the state; she is integrally involved in curriculum and program development, new technology implementations, and process improvement initiatives. In addition to her role as the registrar, Maestas served as the colleague consultant for colleague institutions implementing the Interstate Passport. She is also an adjunct instructor at LCCC and a graduate of the AACRAO SEM Endorsement Program. Maestas received a B.A. in leadership and a M.S. in management from Bellevue University.



**CHRIS MCGILVRAY** is the academic dean for the School of Manufacturing, Automotive, Construction Technologies at Front Range Community College where he focuses on leading Career Technical Education programming and teams to achieve innovative ways to better serve adult learners. He has over 20 years of retail and manufacturing industry experience, is a small business owner, community leader and higher education advocate. He has a doctorate degree in management with an emphasis in organizational leadership and change and a Master of Arts in business management. He wrote his dissertation studying the relationship among perceived and actual competencies performed of entrepreneurs of brick-and-mortar store locations.



**KATELYNN ORELLANA** has served as program administrator at the Washington State Board for Community and Technical Colleges (SBCTC) since March 2023. Orellana collaborates with community and technical colleges as well as other adult education providers across the state to offer professional development rooted in equity, diversity, and inclusion to faculty and staff to improve the experience and quality of education for adult learners. Previously, they served as program coordinator at SBCTC for student support programs, and for seven years prior held various positions at Skagit Valley College in support of workforce grants, counseling & advising, and basic education for adults. Orellana received their A.A. in integrated studies from Cascadia College, and their B.A. in interdisciplinary studies from Western Washington University.



**SUZANNE PREFONTAINE-PHILLIPS, ED.D.**, is an esteemed professional with over 25 years of invaluable experience in the field of reentry and corrections. With an unwavering commitment to making a positive impact on the lives of justice-involved individuals, Prefontaine-Phillips has dedicated her career to creating opportunities for successful rehabilitation and reintegration into society. Prefontaine-Phillips received her Ed.D. in higher education leadership from Azusa Pacific University and her M.P.A. from California Baptist University. She is currently serving as the education reentry navigator for the Washington Department of Correction in Spokane County. Prefontaine-Phillips plays a pivotal role in developing and implementing comprehensive reentry programs tailored to meet the unique needs of individuals transitioning back into their communities.



**SHANNON L. REED** is dean of arts & sciences at Woodland Community College in California. Before moving to Woodland, she served as director of excellence in teaching and learning at Regis University in Colorado and as professor of English at Cornell College in Iowa. She loves being dean at a Hispanic-serving institution (HSI) where she supports a diverse range of programs. As a dean at an HSI, she values the collaborative relationships she's developed with other Minority-Serving institutions like Sac State and University of California Davis, and local programs like Woodland Adult Ed.



**DOLLY ROSENBROOK** is chair for business for creative industries, BAS and faculty of multimedia graphic design at Front Range Community College, a member of the Colorado Community College System. She focuses on building equitable opportunities for higher education degree attainment. She has over 15 years of online teaching experience in graphic communication, arts, and digital media at various institutions including the University of Maryland Global Campus. She is dedicated to serving career and technical education students through her leadership for adult learning and online curriculum design and prior learning assessment. Rosenbrook holds a M.F.A in graphic design from the Savannah College of Art & Design.



**TODD SCHWARZ** currently serves as provost at the College of Southern Idaho (CSI) since January 2014. He has had a long career in a variety of roles at CSI that exceeds 30 years with over 20 in administration including department chair and dean of career technical education. In 2012 he was appointed to the role of state administrator of the Idaho Division of Career Technical Education where he was instrumental in the creation of the Idaho micro credentialing system before returning to CSI. In 2015 he was recognized with the Institutional Leadership Award by the International Economic Development Council. Schwarz holds an associate, baccalaureate, and master's degree from Idaho schools and a Ph.D. in education from the University of Idaho.



**VALERIE SUNDBY, ED.D.**, serves as the director of transfer education at the Washington State Board for Community and Technical Colleges. She provides leadership for Washington's 34 community and technical colleges in the areas of transfer and applied baccalaureate degrees and works collaboratively with higher education partners around the state. She has worked in higher education for the past 20 years, including more than ten years as an academic dean. Sundby holds a Doctorate of Education in higher education leadership, a Master's of Education in educational policy and leadership, and a Bachelor's of Science in cell and molecular biology, all from the University of Washington.



**OLIVIA TUFO** is the manager of community engagement and development for the Programs & Services unit at the Western Interstate Commission for Higher Education (WICHE). The Programs and Services unit broadens student access to postsecondary education and fosters higher education collaborations that increase institutional effectiveness. Tufo manages membership of the Western Alliance of Community College Academic Leaders and the Western Academic Leadership Forum. Tufo also works on initiatives that bring together the West's higher education leaders to address common goals and issues, such as the No Holding Back study and the Interstate Passport Network which aims to streamline the student transfer process through a nationwide network of institutions.



**MARI VOLK** has served as the dean of current and emerging technologies at Bismarck State College (BSC) for two years. She works closely with business and industry to ensure BSC's programs prepare a quality workforce to support the region. Before accepting the dean position, Volk served as the medical laboratory program director and worked as a medical laboratory scientist at Sanford Health for 15+ years. Volk received her A.S. in laboratory tech from BSC, her B.S. in laboratory science from the University of Cincinnati, and her M.H.A. from Colorado State University. She is currently pursuing an Ed.D. from National University, previously Northcentral University.



**AYELET ZUR-NAYBERG** is the director of adult student success at the Colorado Community College System (CCCS), where she leads a project funded by the Lumina Foundation to increase credential attainment among adult learners of color. She has a Doctor of Education degree in leadership for educational equity in higher education from the University of Colorado, Denver. Zur-Nayberg is a lawyer and an economist and holds a Master of Business Administration from Tulane University and a Master of Arts in law and economics from Tel-Aviv University. She has been working in higher education for over a decade both as a faculty member and an administrator.

# LOCAL ATTRACTIONS



The [Tacoma Museum District](#) includes six major museums in Tacoma's downtown core.

- ▶ The [Tacoma Art Museum](#) collection of more than 5,300 works emphasizes the art and artists of the Northwest and broader western region.
- ▶ The [Museum of Glass](#) is a premier contemporary art museum dedicated to glass and glassmaking in the West Coast's largest and most active museum glass studio.
- ▶ The [Chihuly Bridge of Glass](#) is a 500 foot pedestrian walkway that connects the Museum of Glass to the Washington State History Museum.
- ▶ The [Washington State History Museum](#) partners with local communities to explore how history connects us all.
- ▶ The [LeMay America Car Museum](#) spotlights America's love affair with the car.
- ▶ The [Foss Waterway Seaport](#) is a century-old restored shipping warehouse and maritime heritage educational center.
- ▶ The [Children's Museum of Tacoma](#) features hands-on exhibits and an art studio for children of all ages to learn and play.

[Point Defiance Park](#) is a 760 acre park that houses to the acclaimed [Point Defiance Zoo & Aquarium](#).

[The Ruston Way Waterfront](#) connects downtown Tacoma to Point Defiance and provides a 2 mile stretch of paved walking trail and scenic views of the South Puget Sound.



# MEMBERSHIP IN THE WESTERN ALLIANCE OF COMMUNITY COLLEGE ACADEMIC LEADERS

JOIN YOUR COLLEAGUES NOW AND TAKE ADVANTAGE OF THIS SPECIAL MEETING OFFER!

## SPECIAL OFFER FOR NEW MEMBERS!

Institutions joining for the first time will receive a **50% DISCOUNT** on annual dues for the 2023-2024 academic year.

Apply at <https://www.wiche.edu/collaboration-leadership/western-alliance-of-community-college-academic-leaders/membership/>

Membership in the Western Alliance of Community College Academic Leaders is open to public and private community colleges and technical schools and their associated system offices, and state governing and coordinating boards in the WICHE states. Member representatives are the chief academic officers of the institutions or organizations.

## Member Benefits

- ▶ An active listserv for instant access to advice from your colleagues across the region
- ▶ Opportunity to participate in regional initiatives addressing common areas of interest
- ▶ Discounted registration fees for your official representative and members of your staff with expertise in the topics covered at the meeting
- ▶ Opportunity to serve on the Alliance Executive Committee if selected as the state representative

## Dues Schedule

Annual (July 1-June 30) membership dues for eligible community colleges and technical schools are based on full-time equivalent (FTE) students.

## Membership Fees

TIER	ANNUAL RATE
FTE 1-500	\$600.00
FTE 501-2000	\$800.00
FTE 2001-4000	\$1,000.00
FTE 4001-6000	\$1,200.00
FTE 6001-8000	\$1,400.00
FTE 8001- 10,000	\$1,600.00
FTE 10,001- 20,000	\$1,800.00
FTE 20,001-30,000	\$2,000.00
FTE 30,001+	\$2,200.00

**20% volume discount** available for systems or state agencies that join with all their state's or system's eligible institutions and pay via one invoice.

## APPLY TODAY!

[www.wiche.edu/alliance/membership](http://www.wiche.edu/alliance/membership)

## Alliance Executive Committee

### ALASKA

Vacant

### ARIZONA

Bettina Celis  
Maricopa Community Colleges

### CALIFORNIA

Aisha Lowe  
California Community Colleges

### COLORADO

Landon Pirius  
Colorado Community College System

### HAWAI'I

Della Teraoka  
University of Hawaii System

### IDAHO

Todd Schwarz  
College of Southern Idaho

### MONTANA

Angela DeWolf King  
Montana University System

### NEVADA

Jeffrey Alexander  
Truckee Meadows Community College

### NEW MEXICO

Orlando Griego  
New Mexico Military Institute

### NORTH DAKOTA

Kaylyn Bondy  
Bismarck State College

### OREGON

Donna Lewelling  
Oregon Higher Education Coordinating  
Commission

### PACIFIC ISLANDS/TERRITORIES

Vacant

### SOUTH DAKOTA

Barbara Kleinjan  
Lake Area Technical Institute

### UTAH

Vacant

### WASHINGTON

Valerie Sundby  
Washington State Board for Community and  
Technical Colleges

### WYOMING

Kari Brown-Herbst  
Laramie County Community College

---

### For further information, please contact:

#### Kay Hulstrom

Associate Director, Operations and Program Implementation  
303-541-0294  
[khulstrom@wiche.edu](mailto:khulstrom@wiche.edu)

#### Camelia Naranjo, MA., NCC

Interim Assistant Director of Academic Partnerships, Learning and Development  
303-541-0293  
[cnaranjo@wiche.edu](mailto:cnaranjo@wiche.edu)

#### Olivia Tufo

Manager of Community Engagement and Development  
303-541-0261  
[otufu@wiche.edu](mailto:otufu@wiche.edu)





© WESTERN INTERSTATE COMMISSION FOR HIGHER EDUCATION 2023

3035 Center Green Drive, Suite 200  
Boulder, CO 80301

**303.541.0200 | [wiche.edu](http://wiche.edu)**